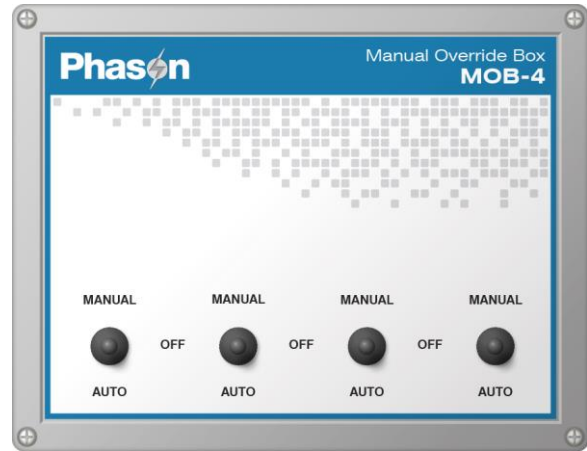


## Manual Override Box

The Manual Override Box (**model MOB-4**) increases the load handling capability of your control's relays and provides an external disconnect. The MOB-4 includes four power contactor relays with AUTO-OFF-MANUAL switches and snubber filters.

### Switch function

- ◆ **Manual** The load is on.
- ◆ **Off** The load is off.
- ◆ **Auto** The control operates the load.

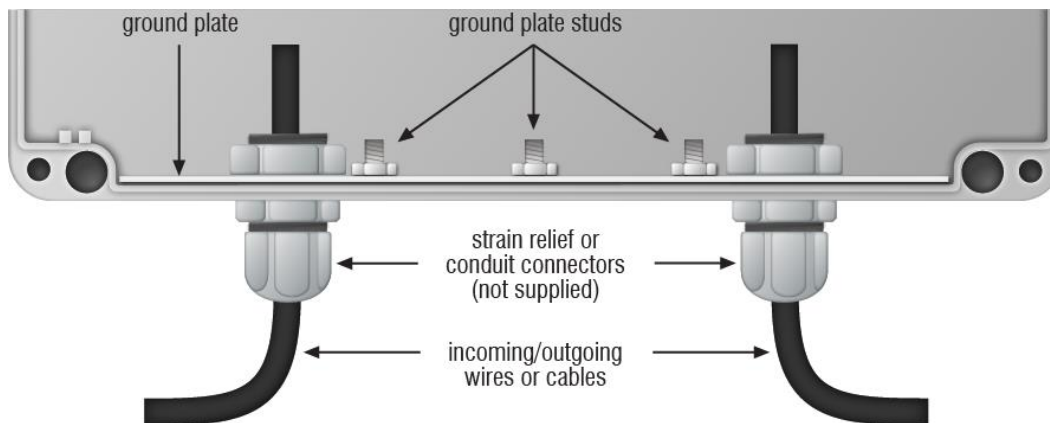


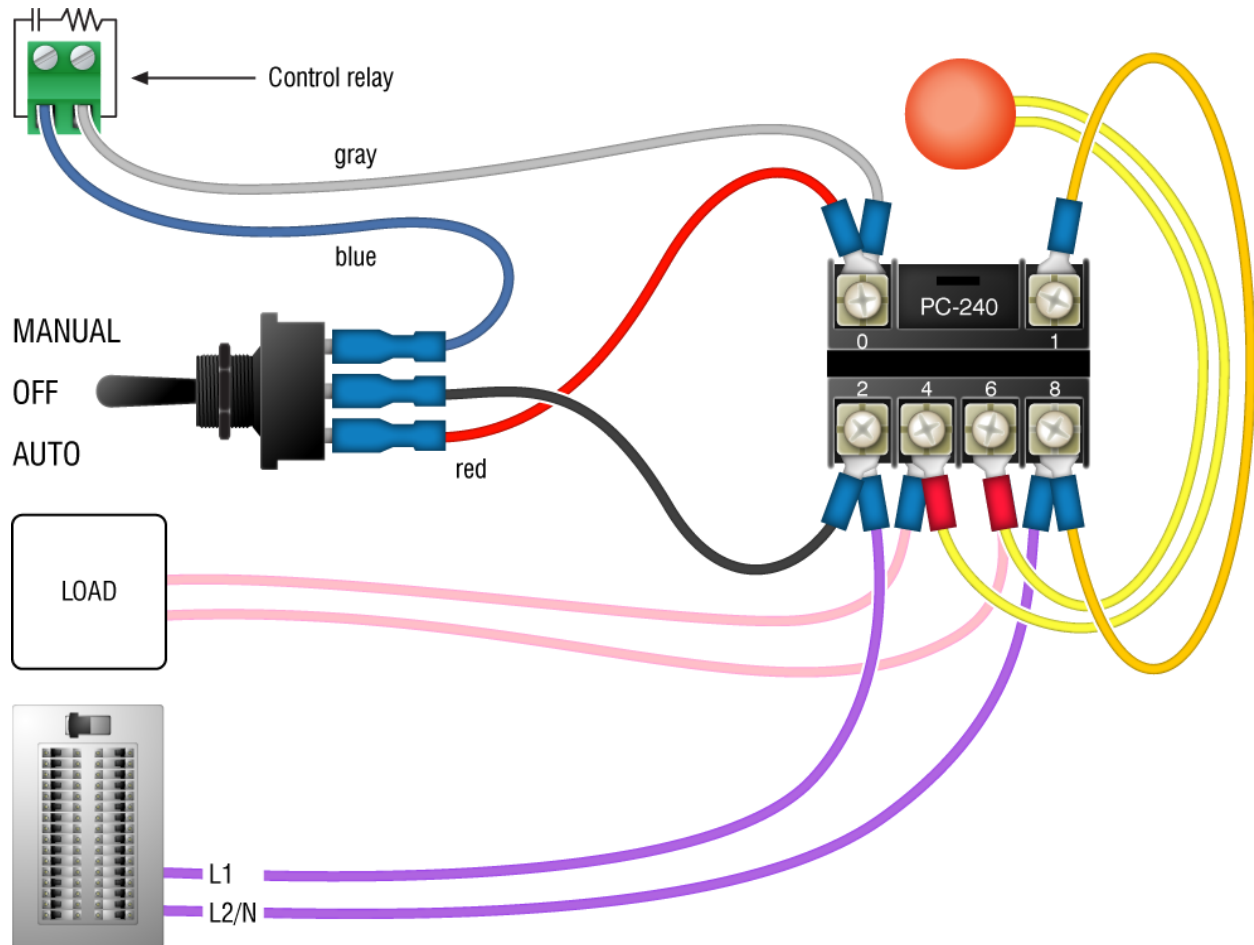
### Electrical ratings

- ◆ **Coil** 10.2 mA at 240 VAC
- ◆ **Contact** 25 A at 240 VAC; resistive  
2 HP at 240 VAC, 1 HP at 120 VAC; motor, power factor 0.4  
1300 W at 120 VAC; tungsten

### Installing the power contactor

- ◆ Do not remove the ground plate.
- ◆ Use watertight strain reliefs or conduit connectors at all cable entry points; this will secure the ground plate to the enclosure.
- ◆ Use fork or spade connectors at all terminals.
- ◆ Do not remove the existing connectors from any of the terminals.





## Accessories

Phason offers the following related accessories. For more information, see your dealer or visit [www.phason.ca](http://www.phason.ca).

- ◆ **Model KMOB4-ACTUATOR** is a kit that adapts two of the switch and relay pairs to provide manual or automatic control of an actuator or curtain machine.
- ◆ **Model PC-240** is a replacement power contactor that includes the relay and mounting hardware.
- ◆ **Model 127-0** is a replacement snubber filter. Snubber filters help extend the life of relay contacts by absorbing electrical noise.

Phason Inc.  
2 Terracon Place  
Winnipeg, Manitoba, Canada  
R2J 4G7

Phone: 204-233-1400  
Fax: 204-233-3252

E-mail: [support@phason.ca](mailto:support@phason.ca)  
Web site: [www.phason.ca](http://www.phason.ca)